

THE LATEST IN DIABETIC FOOT ULCER MANAGEMENT

A NEW MODALITY FOR DIABETIC WOUND CARE

developed by



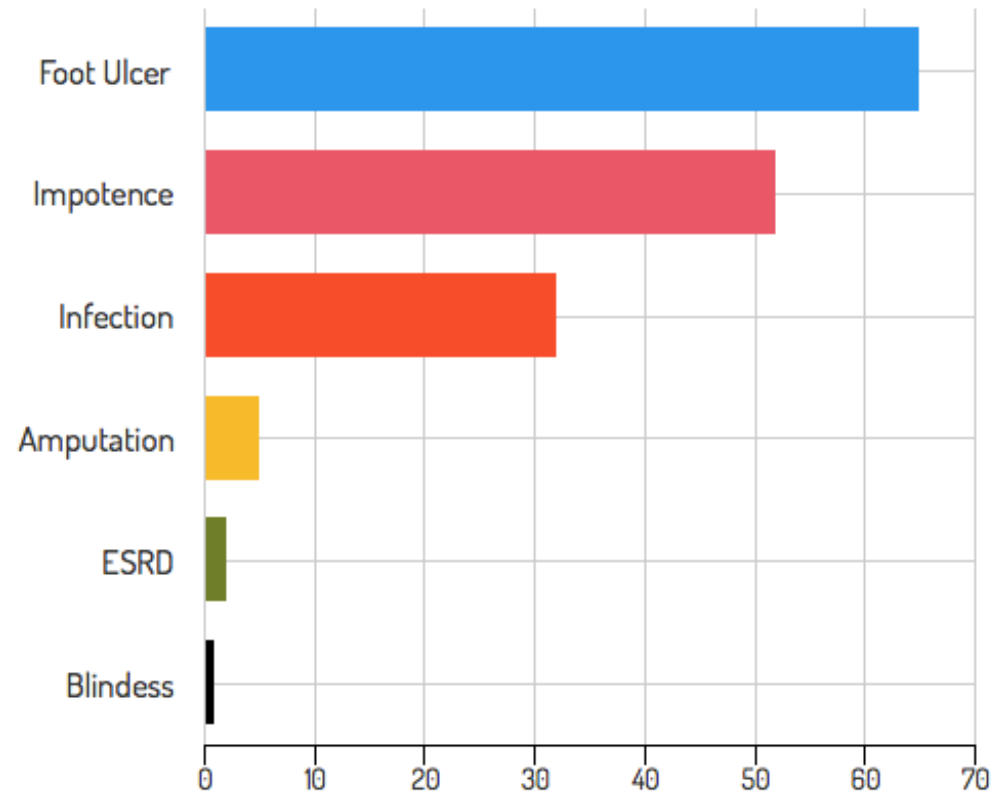
This program was supported by an educational grant from Delivra

Powered by



HOW DOES DIABETIC FOOT DISEASE COMPARE WITH OTHER DIABETES COMPLICATIONS?

- **Infected Wound:** most common reason for hospital admission
- Account for largest number of hospital bed days used for diabetic patients
- 1 in 5 leads to lower extremity amputation
- After a major amputation, 50% of people will have their other limb amputated within 2 years
- 20 to 40% of the total costs of diabetes are related to the diabetic foot
- **85% preceded by an ulcer**



Singh, Armstrong, Lipsky, JAMA, 2005 Rogers, Lavery, Armstrong, JAPMA, 2008 Russo, et al, AHRQ, 2006 Trautner, et al, Invest Ophthalmol Vis Sci, 2003 Lavery, Armstrong, et al, Diabetes Care, 2003 Fedele, et al, J Urol, 2001 Bruno, Diabetes Care, 2003

DOXYCYCLINE AS A TREATMENT OPTION FOR DFUs

- Doxycycline is an old and versatile antibiotic
- Has both antibacterial and anti-inflammatory properties
- Anti-inflammatory properties are particularly desirable in the treatment of DFUs
- Helps shape wound environment by modulating proteolytic enzymes

SUMMARY SLIDE

DELIVRA-DX TOPICAL FORMULATION BENEFITS DOXYCYCLINE BY:

- Providing greater stability
- Quicker onset at the source
- Deeper, targeted penetration into the wound bed
- Slower-release of doxycycline

DOXY-DELIVRA FORMULATION— MOA HYPOTHESIS

DIABETIC FOOT ULCERS (DFU's)

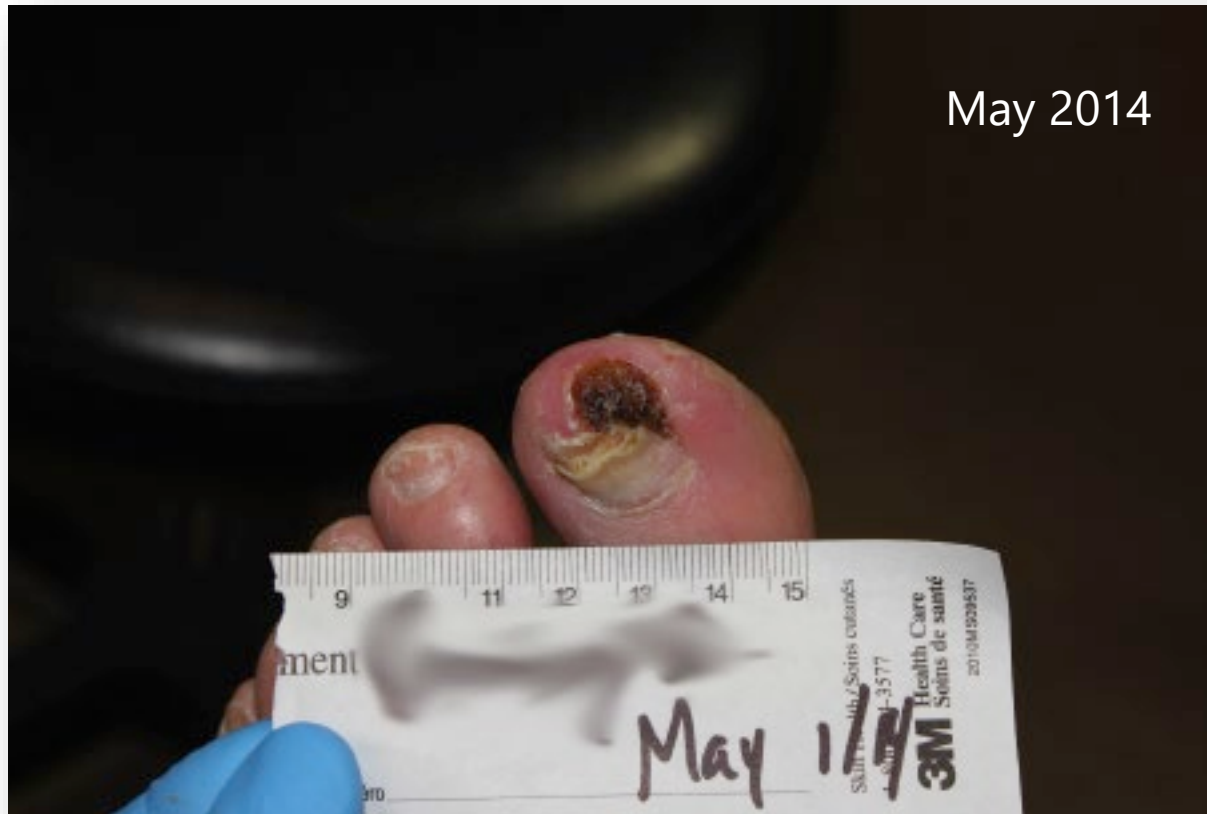


A NEW MODALITY FOR DIABETIC WOUND CARE

This program was supported by
an educational grant from Delivra

Powered by
 delivra™

PATIENT #1— ISCHEMIC DISEASE, INGROWN TOE NAIL



A NEW MODALITY FOR DIABETIC WOUND CARE

This program was supported by
an educational grant from Delivra

Powered by
 **delivra™**

PATIENT #1— ISCHEMIC DISEASE, INGROWN TOE NAIL



A NEW MODALITY FOR DIABETIC WOUND CARE

This program was supported by
an educational grant from Delivra

Powered by
 delivra™

PATIENT #1— ISCHEMIC DISEASE, INGROWN TOE NAIL



A NEW MODALITY FOR DIABETIC WOUND CARE

This program was supported by
an educational grant from Delivra

Powered by
delivra™

PATIENT #1— ISCHEMIC DISEASE, INGROWN TOE NAIL



A NEW MODALITY FOR DIABETIC WOUND CARE

This program was supported by
an educational grant from Delivra

Powered by
delivra™



About the Company

A Canadian company that has successfully developed and commercialized a revolutionary and proprietary technology for superior transdermal delivery of pharmaceuticals and natural molecules.

In just 10 years, based on extensive R&D work and focussed investment, Delivra has developed into an emerging leader in transdermal delivery in the pharmaceutical and natural health industries.

It all started for a very personal reason

A NEW MODALITY FOR DIABETIC WOUND CARE

This program was supported by
an educational grant from Delivra

Powered by

